

# Gympie Historic Auto Club Inc.

POSTAL ADDRESS:  
GHAC, PO Box 353 Gympie QLD 4570

**AUGUST**



## THE TALK TUBE

FACEBOOK: Gympie Historic Auto Club – new page 2024  
WEBSITE: [www.gympiehistoricautoclub.com.au](http://www.gympiehistoricautoclub.com.au)  
EMAIL: [gympiehistoricautoclub@outlook.com](mailto:gympiehistoricautoclub@outlook.com)

### **PRESIDENT'S PONTIFICATION**

Thanks to those who assisted with and supported the 4 club rally. It was good to catch up with our neighbouring fellow enthusiasts. A special thanks to Carol without whom the rally could not have been staged. Rob's efforts also deserve an honourable mention. Congratulations to the South Burnett Antique Motor Club for taking the attendance trophy; Paul Van Horck for the peoples choice 1955 Ford Zephyr; Andrew White the youngest entry trophy; Lilly Heiner, the best competitor trophy for braving the navigator seat in the 501s and Allan Keith the hard luck trophy for electrical issues and oil incontinence.



Our focus now goes to the swap, only a few weeks away, where again we call upon the support of members in whatever capacity they can to set up, run, and take down over 3 busy days. In the meantime, I understand that people "retracing" the first lap by motor car around Australia 100 years ago will be in town on August the 21st at the Central Shopping centre. I plan to visit in my 5CV.

I have the CENTENARIANS RALLY 2025 to look forward to, having just discussed our Monday 8th Sept program with several schools, who have generally shown great interest in receiving our visit. This event is a little less formal than the recent 4 Club Rally, but still offers experiences not on the local runs, so consider acting in a support role if your car is not eligible yet.

Happy Safe Heritage Motoring , Ralph

#### **Inside This Issue**

- ♦ Office bearers
- ♦ Club Merchandise
- ♦ Rallies & Events
- ♦ For Sale & Wanted
- ♦ Rally Photos
- ♦ Book of the Month
- ♦ Aussie Made Cars

#### **General Meeting Dates**

Thursday 28th August 7.00pm

Saturday 27th September 9.00 am

<b><u>2024 GHAC Elected Office Bearers</u></b>			
<i>Club position</i>	<i>Elected officer</i>	<i>Phone contact</i>	<i>Email</i>
President	Ralph Richardson	0408 616 709	ralphrichardson5@bigpond.com
Vice President	Steve Stockden	5482 7256 or 0427 827 256	ssstockden@bigpond.com
Secretary	Carol White	5483 7361 or 0428 556 547	whiteshouse@spiderweb.com.au
Treasurer	Annette Morgan	5482 2303	morgs46@bigpond.net.au
Rally coordinator	Vacant		
Editor	VACANT		
Librarian	Paul van Horck	5483 9340 or 0488 023 282	vanhorck@hotmail.com
Dating Officer	Trevor Keene	0401 720 228	tkeene47@gmail.com
Swap Coordinator	Steve Stockden	5482 7256 or 0427 827 256	ssstockden@bigpond.com
Swap bookings	Yvonne Cooper	0460 864 044	ylcooper@hotmail.com
Meet and greet	Alan Brown	0419 179 220	arbrichard@hotmail.com

#### BANK DETAILS:

Bendigo Bank

BSB: 633-000

A/c No: 182657015

A/c Name: Gympie Historic

## CLUB MERCHANDISE

### GHAC club polo



The polo shirt is the Aussie Pacific Morris (army green and white)

It is short sleeve only in men's or ladies.  
Mens (1317) - sizes S to 5XL  
Ladies (2317) – sizes 6 to 26

### GHAC club dress shirt



### Regular Monthly events by other s

**1st Saturday—Cars and coffee Sunshine Coast. 7am to 10am German Bakehouse Café, 54 Junction Drive Coolum Beach.**

**1st Saturday of every month, Cars ,Bikes, Coffee at Tramcars, 11 Hall Rd Glanmire. 8am to 11 am**

**2nd Sunday—Cooloola Cove Cars and Coffee. 8am to 10am Shopping Centre Cooloola Cove**

**3rd Saturday– Moonlight at Matildas Traveston. 4pm to sunset (depending on season)**

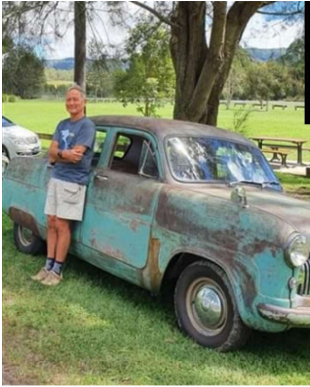
**3rd Sunday—Cooroy Cruise—in. Maple St (opposite library and at rear of the shops). Hosted by Roadrunner Car Club**

# RALLIES

2025

Month	Time/Place	Event
<b>August</b>		
Thursday 21st	From 8am	Around Australia Citroen trip. Display in Central shopping centre
<b>September</b>		
Monday 1st to 13th	As required	Promotion for swap meet. Moving signage truck
Thursday 4th	James Nash SHS	School event to pavilion
Thursday 4th	5.pm Bunnings	Fathers Day event
Friday 5th	From 9.00 am Gympie Gold Mining & Historical Museum	CENTENARIANS RALLY for cars over 100 years old. Registration and activities in Gympie
Saturday 6th	9 am as above	Relaxed touring by back roads to Maryborough
Sunday 7th	9. am Maryborough	Visits to places of Interest in Maryborough
Monday 8th	8am St Helens School	Return to Gympie via school visits for final dinner .
Saturday 6th	7 am Clubrooms	Static display—Imbil showgrounds—need to be in place by 8am
Thursday 11th	9am Showgrounds	Gympie Swap -Marking out sites and set up
Friday 12th	9am Showgrounds	Gympie Swap - Final site set up and trader set up
Saturday 13th	5am Showgrounds	GYMPIE SWAP
Thursday 18th	Cooloola Christian College	Event at school
Thursday 25th	10am to 2 pm Cooinda Aged care	Cooinda Spring Fair
Sunday 28th	Old Butter Factory	Centenary celebrations. 1920's vehicles invited
<b>October</b>		
		Rally opportunity
<b>November</b>		
Saturday 18th	VCCAQ Carindale	Swap (English & European vehicles)
<b>December</b>		
Sunday 7th	TBA	Christmas Party





Also by this author, "Lemon" and "Extra Lemon". Available from the editors library

## Book of the Month

BY: Paul van Horck - GHAC Librarian

### Total Lemons

**The author** Tony Davis has written about cars, on and off, for more than twenty years. He has driven some of the fastest, most expensive and most impressive vehicles ever built, yet retains a bizarre fascination with those at the other end of the spectrum, those created by designers and engineers who, as he puts it, 'think a *tour de force* is a bicycle race'.

### TOTAL LEMONS

ONE HUNDRED AND ELEVEN HEROIC FAILURES OF MOTORING



TONY DAVIS



YES,  
THAT IS A CAR ON THE FRONT COVER.  
DON'T BELIEVE US?  
HOP IN! NO, NOT JUST YET.

There's no rear door or hatch, so we need to remove the seats to put your luggage in first. Oh, and you can't just back it out of here: you'll have to stop the engine and restart it to engage reverse.

Lightburn Industries, the makers of this Lightburn Zeta, knew car design — after all, they manufactured washing machines, concrete mixers and wheelbarrows. But don't just take our word for it. *Wheels* magazine said of this car, 'Its performance is virtually nil.'

*Total Lemons* is a hilarious look at one hundred and eleven such automotive atrocities. Bad design, appalling execution, ridiculous pretensions, ludicrous names — it's all here in this motoring hall of shame.

### Lemon!

60 heroic failures of motoring



TONY DAVIS

### Extra Lemon!

More heroic failures of motoring by the author of the bestselling *Lemon!*



TONY DAVIS



1959 series 3 Vanguard, call Ted on 5482 9078.

Not a Lemon



1930

Model A Ford parts—those other than the chassis and body shell.  
Gary Pate 0412468889 after 11/6

Also Lemon free



## Black Mountain, Belli and beyond and back



## 4 Club Rally





## AUSTRALIAN MADE CARS

### RENOUN

E.W.Brown Motors Pty Ltd Melbourne. These were a variant of the Ford Model T / Palm cars advertised in 1923-24

### REVILLE

Reville Motor Company, Valley Queensland, promoted a tourer utility with other variants available in 1950. Planned to have a 4 cylinder 1172cc Lanchester engine and 4 speed gearbox with multi variable gearing and both rear wheel drive and front wheel drive options. It featured independent suspension using quarter elliptic springs for each wheel. Cruising speed of 50 mph was claimed with fuel economy of 35mpg to 50 mpg depending on the gearing. There is no evidence that any were built.

### RICHTER

C. Richter Hawthorn Vic made a special using an air cooled V twin engine of Italian origin and a friction drive in 1903. Top speed was 20 mph..

### ROO

The Roo Motor Car Manufacturing Co, Sydney NSW.

The Roo was a water cooled two horizontally opposed cylinder roadster with multi plate clutch, 3 speed gearbox and underslung chassis intended for volume production. The original car was driven from Sydney to Melbourne and back in 1917 and averaged over 45mpg under adverse conditions. Only two and a half cars were made.



### SHEARER

The Shearer is a wood fired steam carriage built by the Shearer farm machinery Company in 1897 for David Shearer's own use. It used a water tube boiler at 350psi and with 9 people on board would reach 15mph. It still exists in the National Motor Museum in Birdwood SA



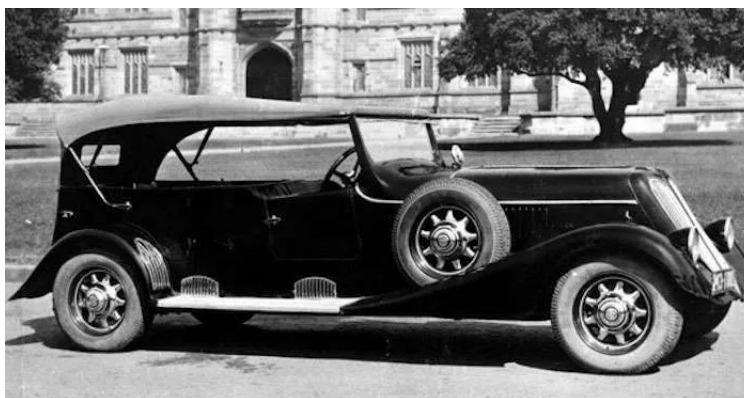
### SHIELS

Phoenix Motors Pty Ltd St Kilda Vic built one car for the Melbourne Motor show of 1933. It was a sports car with imported 6 cylinder engine with gearbox and diff mounted in front of the engine., 2 quarter elliptic springs each side at the front and underslung semi elliptics at the rear. It had a top speed of 75 mph.

### SOUTHERN CROSS

Mark's Motors Construction Ltd, Newtown NSW produced this chassisless car based on the Mark's Moir of the early 1920's. with laminated timber construction. It featured an Australian made opposed 4 cylinder side valve engine with aluminium heads designed by W.B. Foulis

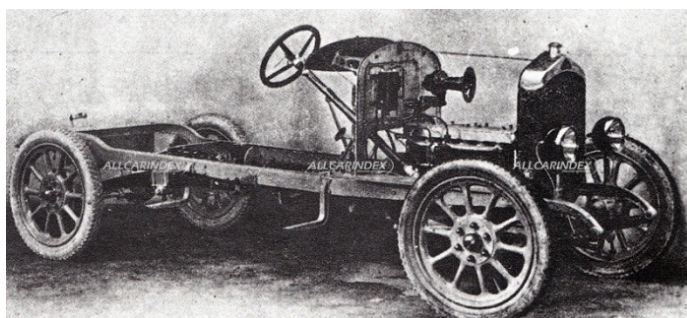
who had been responsible for the Roo car. The Southern Cross was christened by Lady Kingsford Smith on 2nd June 1933. The 1934 cars had a shorter wheelbase and increased hp to 60. After the death of Sir Charles Kingsford Smith in 1935, production ceased. *Note: There is an original 1934 Southern Cross on the market in Adelaide at present*



### SOUTHERN SIX

Australian British Cars Ltd Sydney NSW was registered in 1921 to assemble Southern Six and Southern Four cars from British components including the Sage 20hp 6 cylinder engine, Wrigly gearbox, Zenith carburettor, BTH magneto and Brolt electrics. Suspension was semi elliptics at the front and cantilever at the rear. A test in 1922 gave

55—60 mpg and 25mph. It is likely that only 1 car was built.



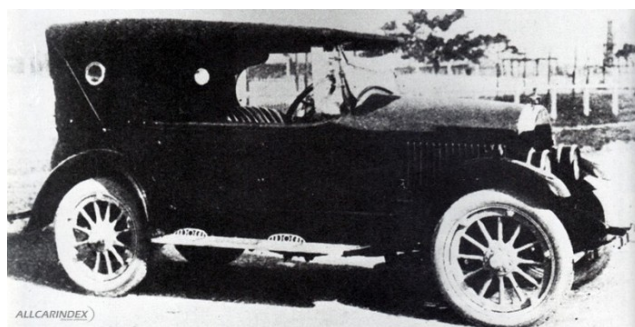
### SULMAN\_SIMPLEX

Lloyd & Sulman, Camperdown NSW built a 69.9 ci V twin air cooled car with 2 speed gearbox and chain drive to the rear axle with a top speed of 40mph. They planned to produce a 3 speed model as an offering between low cost water cooled cars and motor cycles. Tom Sulman was killed in his Lotus at Bathurst in 1971.



### SUMMIT

Kelly's Motors Ltd Sydney and Alexandria NSW produced the car based on an imported Lycoming 4 cylinder engine and imported American chassis and Australian body between 1923 and 1925. It featured Acme patent suspension and standard





equipment included front and rear windscreen wiper, clock and cigar lighter and a radio was available in 1925.

## SUTTON

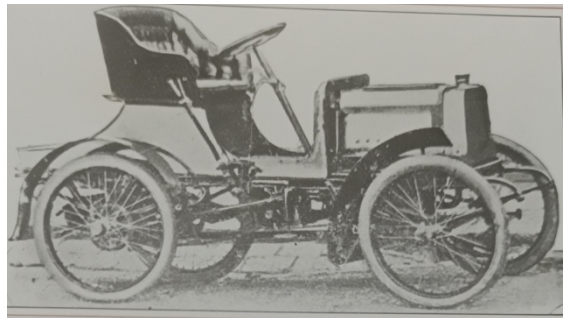
H Sutton, Melbourne Vic built several vehicles in the 1900 and 1902 period with at least one having chain drive front wheel propulsion and rear steering. He focused on getting his air cooled engines to run on low grade fuel and the Austral Otis Co showed some interest in production, but the overall price and more advanced imports ended the attempt.

## SWINNERTON

A Swinnerton, Leichardt NSW may have built several cars between 1908 and 1914. The latter had an 11hp 4 cylinder engine with belt drive and was similar to many English and European cycle cars of the period.

## SYME

Syme Engineering & Motor Pty Ltd built a single cylinder car with 3 speed gearbox and chain drive in 1906, priced at 250 pound. They also intended to produce improved models with shaft drive, but there is no evidence that any were made.



## TO GIVE AWAY TO DESERVING PERSON

Terraplane head

2 diffs and engine block—possibly Morris Minor

