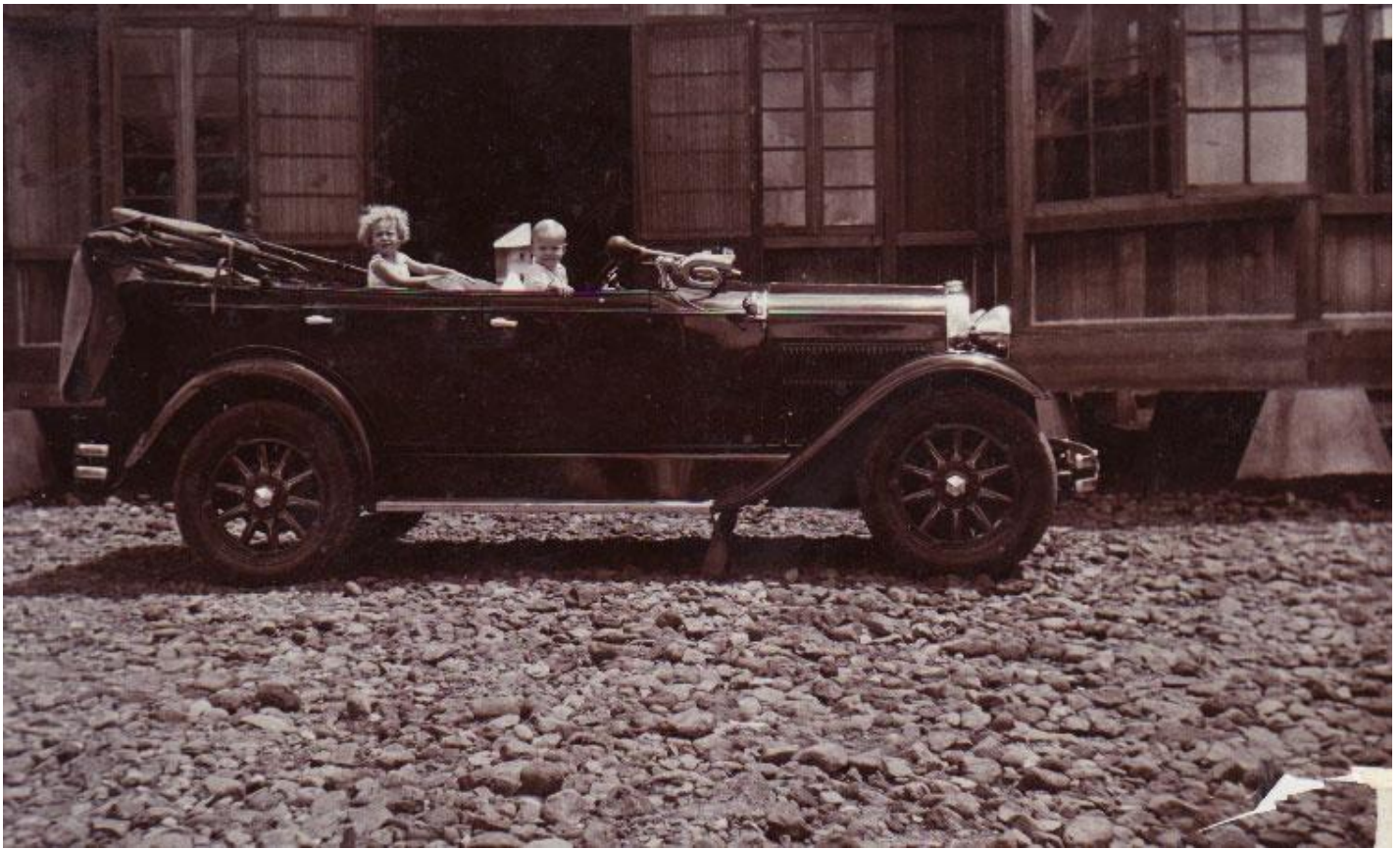




A 1919 Mercer Company publicity shot shows the car at it's very best angle.



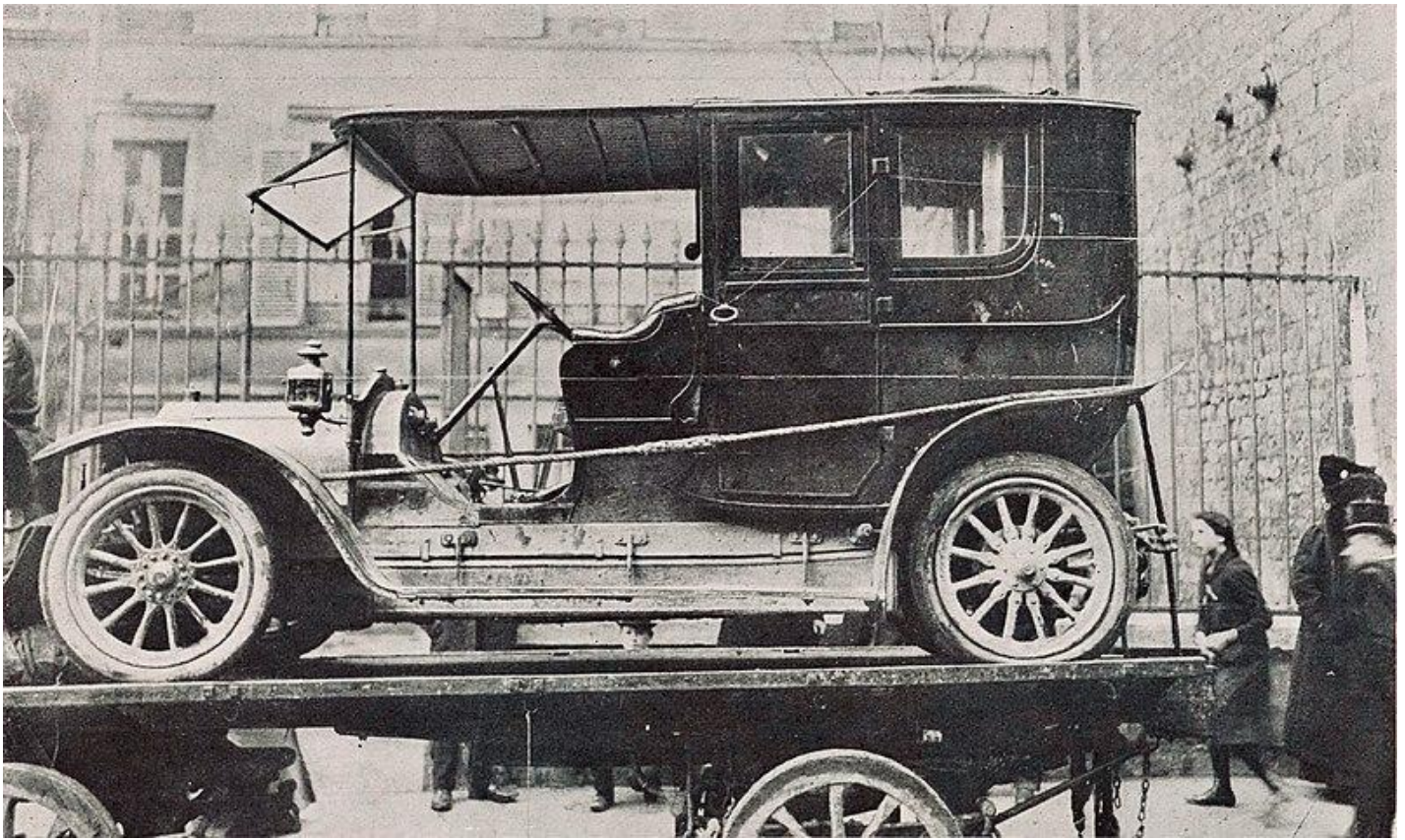
Wilhelm and Annemarie Kusserow used their 1928 Whippet 98 to distribute religious literature in Bad Lipspringe.



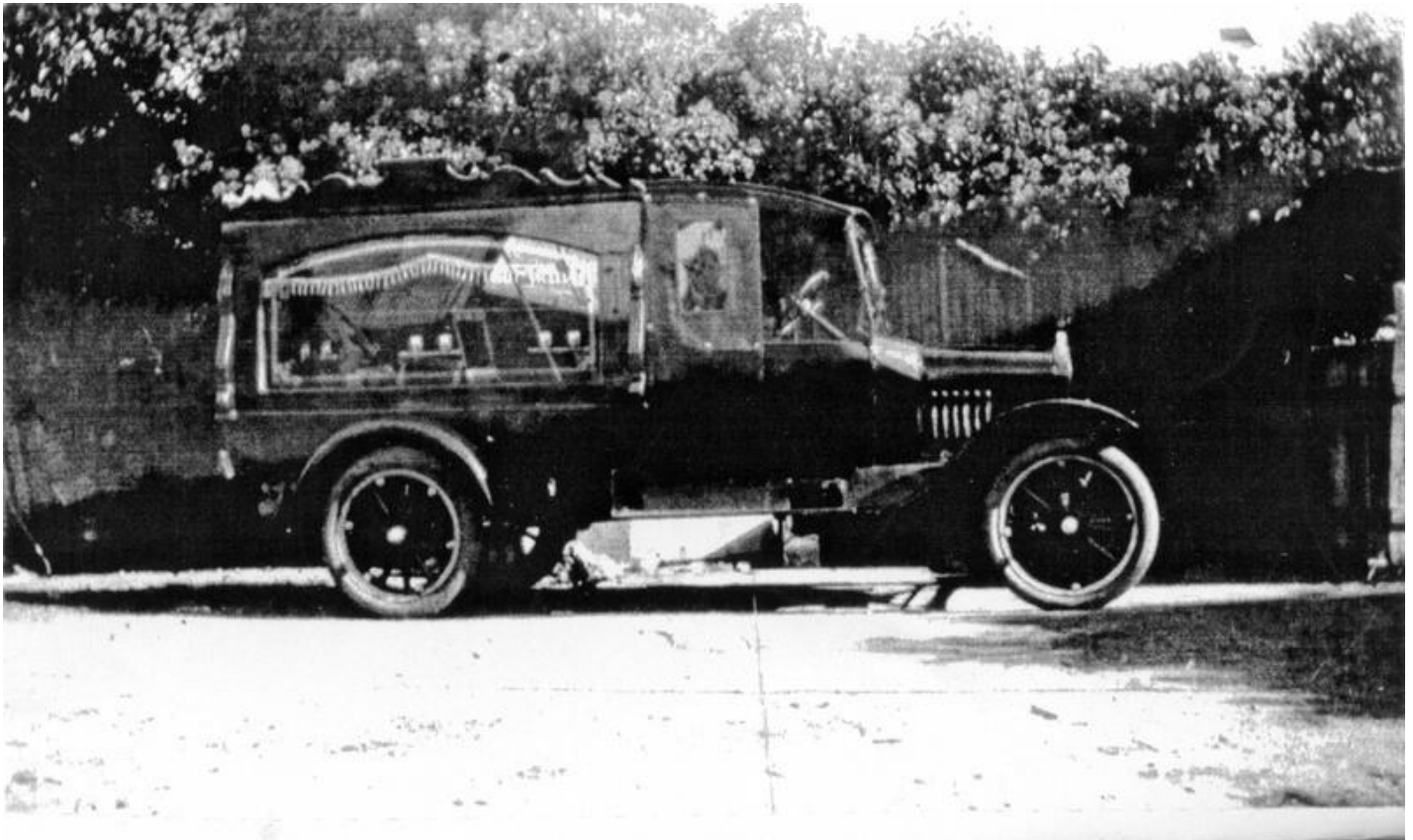
The van Kampen family lived in Japan in the 1930's but were interned when the war broke out. Their fate and the fate of their 1929 Essex Challenger are unknown.



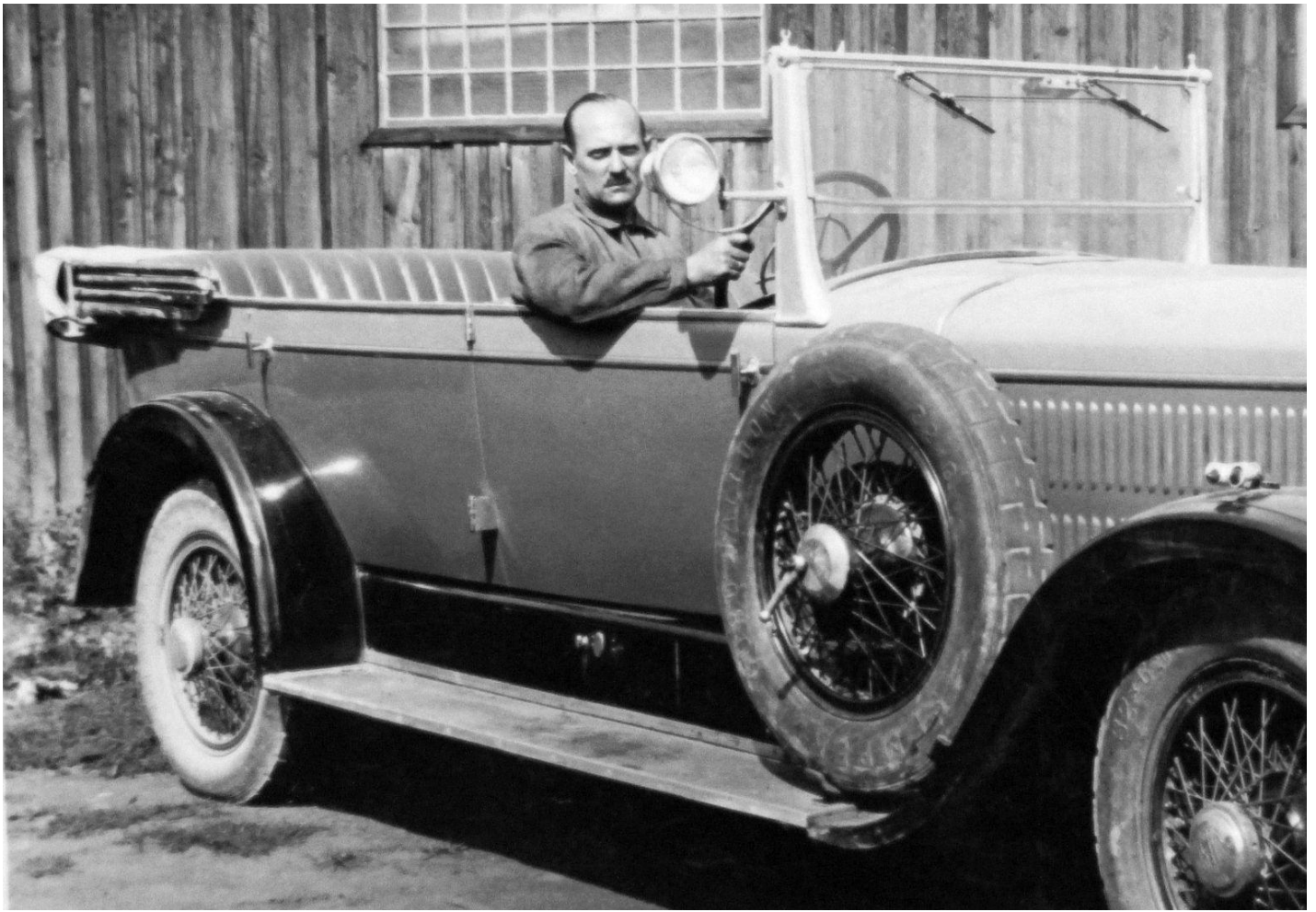
A German magazine wanted the identity of this tourer in the snow. My guess is Austro-Daimler 14/32 hp. If you can identify it positively, I would love to hear from you.



A stolen 1910 Delaunay-Belleville was found in Ordener Street, Paris and loaded on a cart for return to its owner.



Riddle Brothers Undertakers had a very ornate funeral car that appears to be a horse drawn hearse body transplanted onto a circa 1923 Ford light commercial chassis. Does anyone know where Riddle Brothers was located?



A family photograph has a man in a Steyer.



From the same source another Steyer that may have been in the same family.



Publisher Blanche Wolf started her business in 1911 and it became an empire by the 1930's. In 1929 she owned this Stutz.



A 1927 3 litre Bentley RT1542 owned by Robert Sumner and 1929 4½ litre Bentley PL3486 owned by Gerald Sumner.
Photograph taken in 1937.



A family on an 'Around Australia Adventure' in 1947, parked their Willys-Knight 56 in front of Parliament House, Canberra.



A new National is being used for a tour of New York in 1913.



These blokes have obviously won something important, going by the laurels on their Horch tourer.



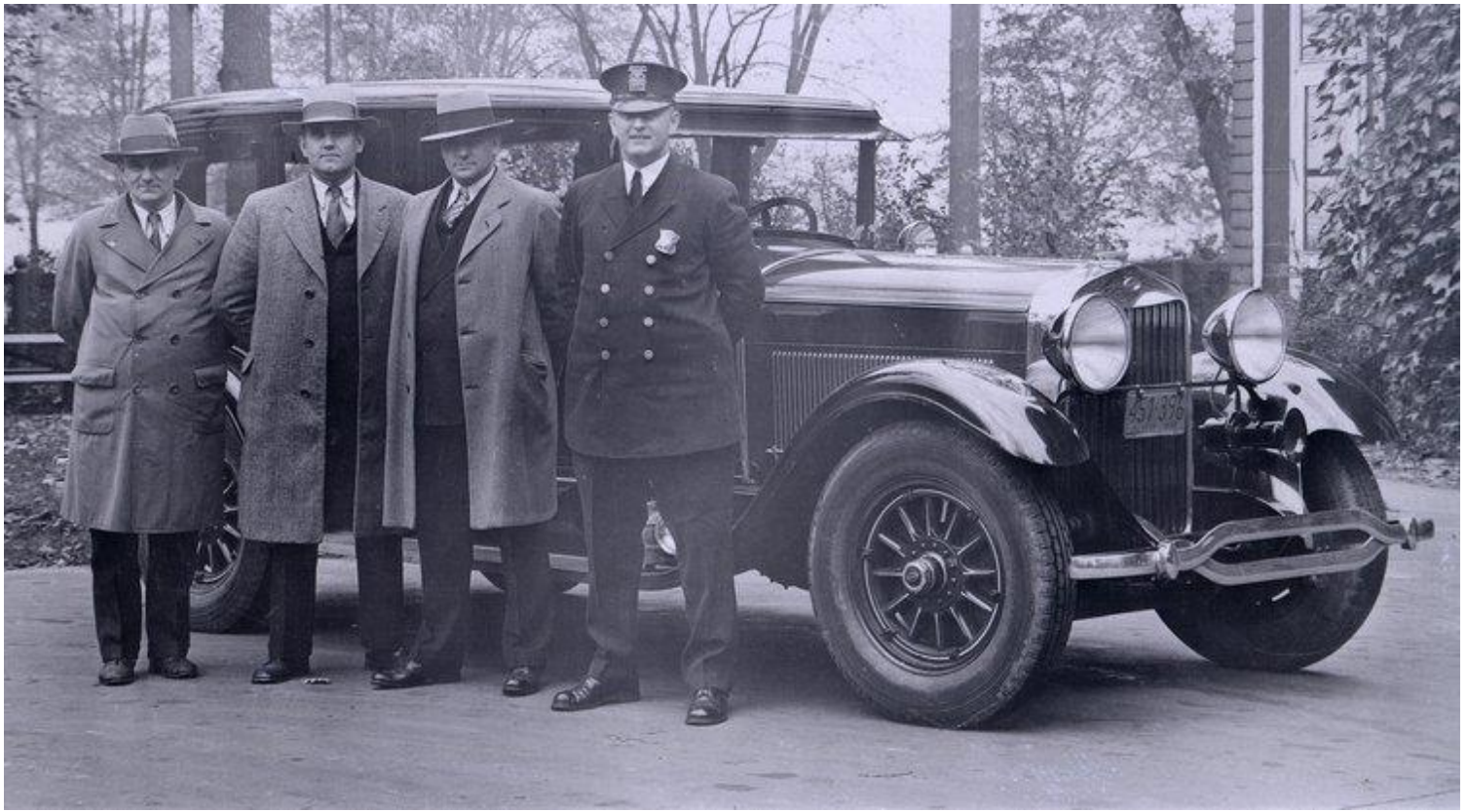
It's 1925 and the Lauren & Klement company now calls its product 'Skoda'. This one was in Southern Europe.



Handsome lifeguards on a beach in Oregon have a 1928 Durant roadster with a cable reel mounted in the dickey seat.



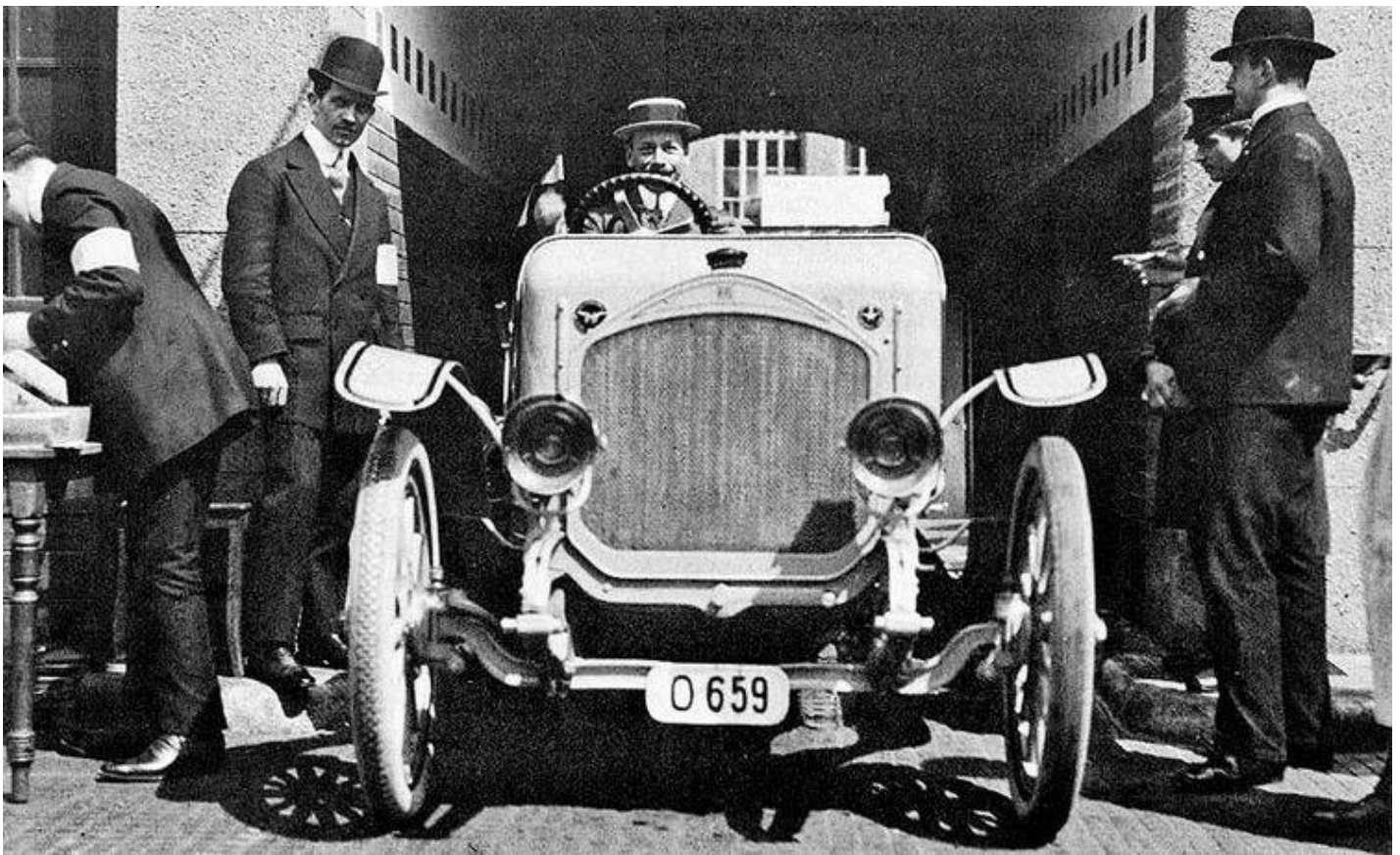
Seven people in a Rex Simplex are dressed for long distance touring. The numberplate is German.



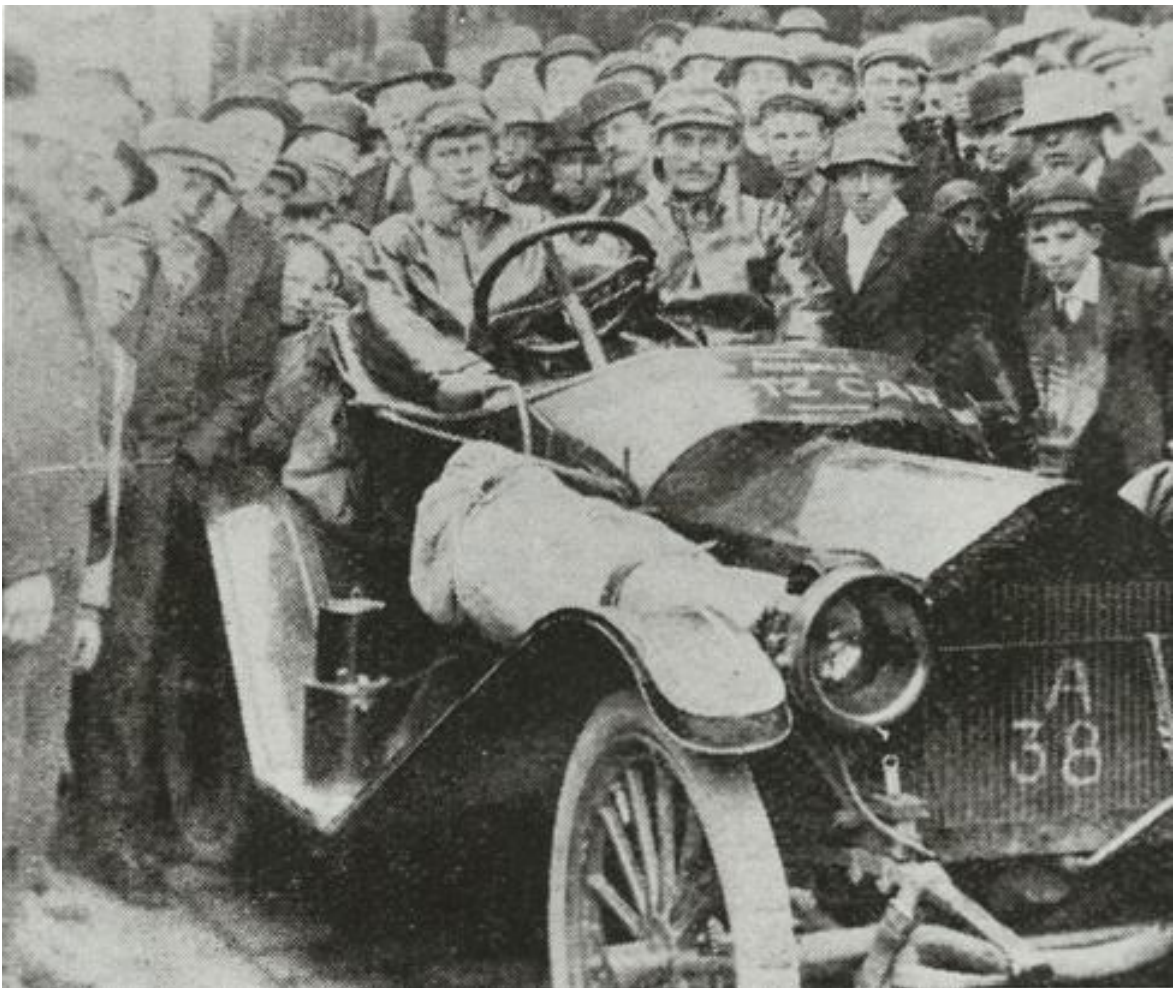
John Whitman (second right), Detroit Police Lead Detective, with the three other officers who investigated Rose Veres who was accused of murdering 11 men, including several husbands, in the 1920's. In this 1931 photograph they are posing with the Lincoln that was issued to them. Rose was ultimately convicted and sentenced to life in prison, but Whitman was unhappy with the way the investigation was conducted and pushed for a re-trial. Veres was finally exonerated in 1945.



The Reichenberger Automobile Factory (RAF) in Austria built fine cars from 1906 until it was bought out by Laurin & Klement in 1913. Above is a typical RAF limousine from about 1911.



I thought this was also an RAF, but I'm told it's an Orac car.



Brothers Clive and Francis Birtles in a 1914 Metz friction-drive.
Clive usually drove Maxwells and Francis was better known for Fords and Oldsmobiles.



An unusual Metz with electric headlights set into the front mudguards.
I don't think the folks down at Pierce-Arrow would have been happy about it.



This is what a typical 1914 Metz looked like.



A family photograph of a father and son in Ontario with a 1928 Buick.



The Olmstead family of Sardinia, New York, had a Chevrolet Baby Grand in 1916.



A German family photo of an Opel from about 1910. The electric sidelights would have been fitted a few years later.



This is a newspaper picture of contestants in the Morpeth Road Race, Newcastle, 1st January, 1909 aboard a Mercedes.



A lady garage attendant fuels up a Citroen in Germany, 1931.



Australian soldiers in a 1914 Standard, thought to be in New South Wales.



A stylish young lady with a Mercedes roadster in front of a futuristic styled building in Germany 1928.



A 1928 film by Jonah Jones has a young lady in a Kissel 6-55 speedster being pursued by 15 motorbike cops.



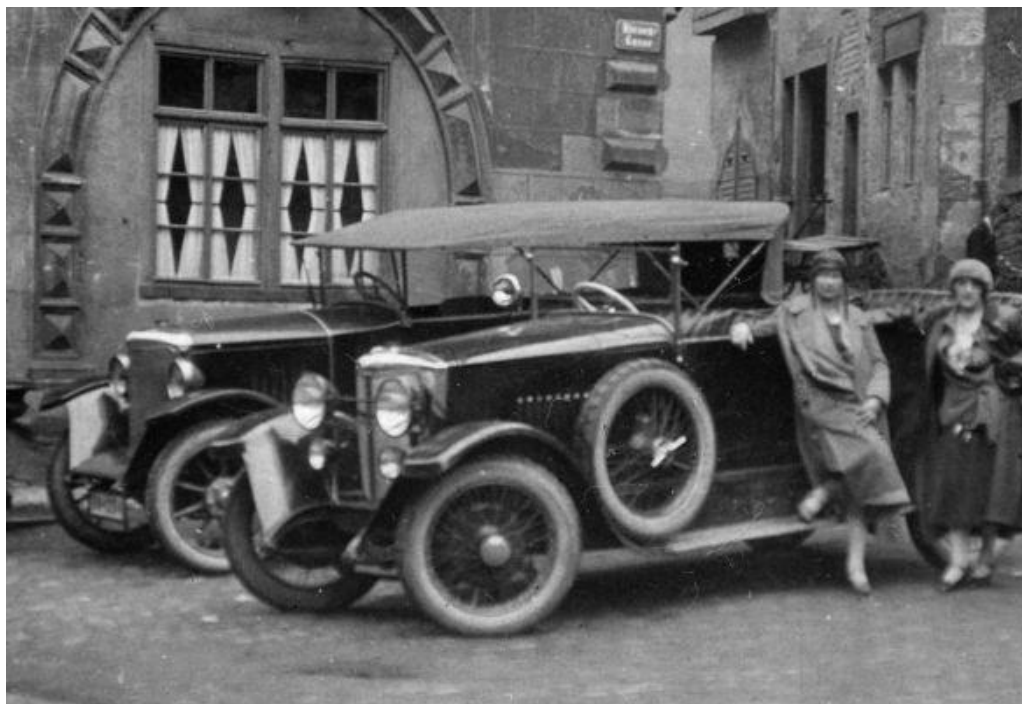
German soldiers are having a great time in a 1909 Lion Peugeot.



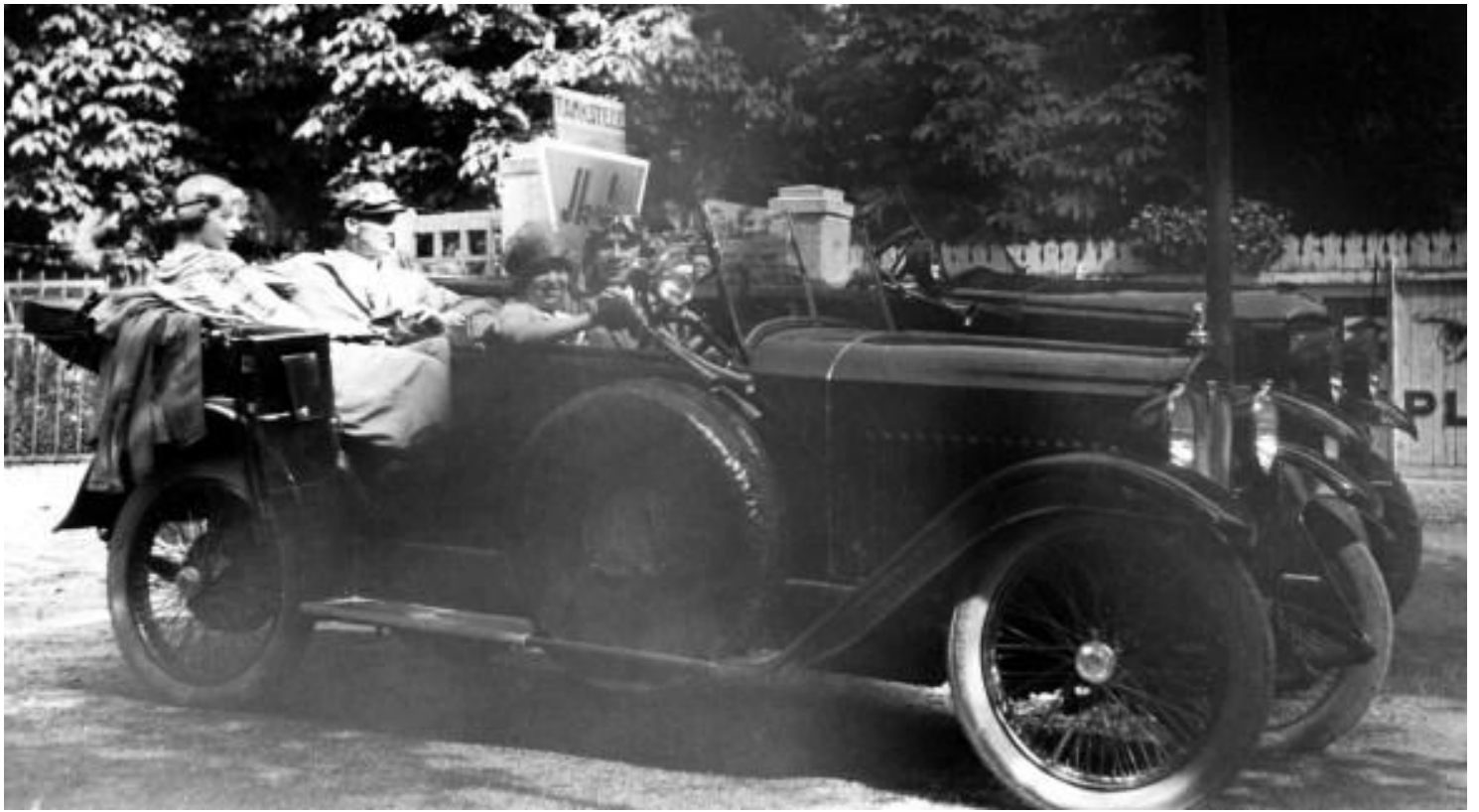
Here is a mystery car for you to solve. There does not appear to be a radiator cap so it may be air cooled.
My guess 1906 Waltham Orient model E 16 hp 2-cylinder



It's the height of the Depression, California 1934, and a rural family is going somewhere in their old Ford.



The car closest to the camera may be a Komnick, the other one may be a Presto.



German folks in a 1922/23 Adler appear to be having a good time. But what's that car in the background?



Some folks in a 1922 Buick Six seem to be having a good time in Czechoslovakia.



The ambulance photographed at Innsbruck is a 1914 Laurin and Klement type SG.



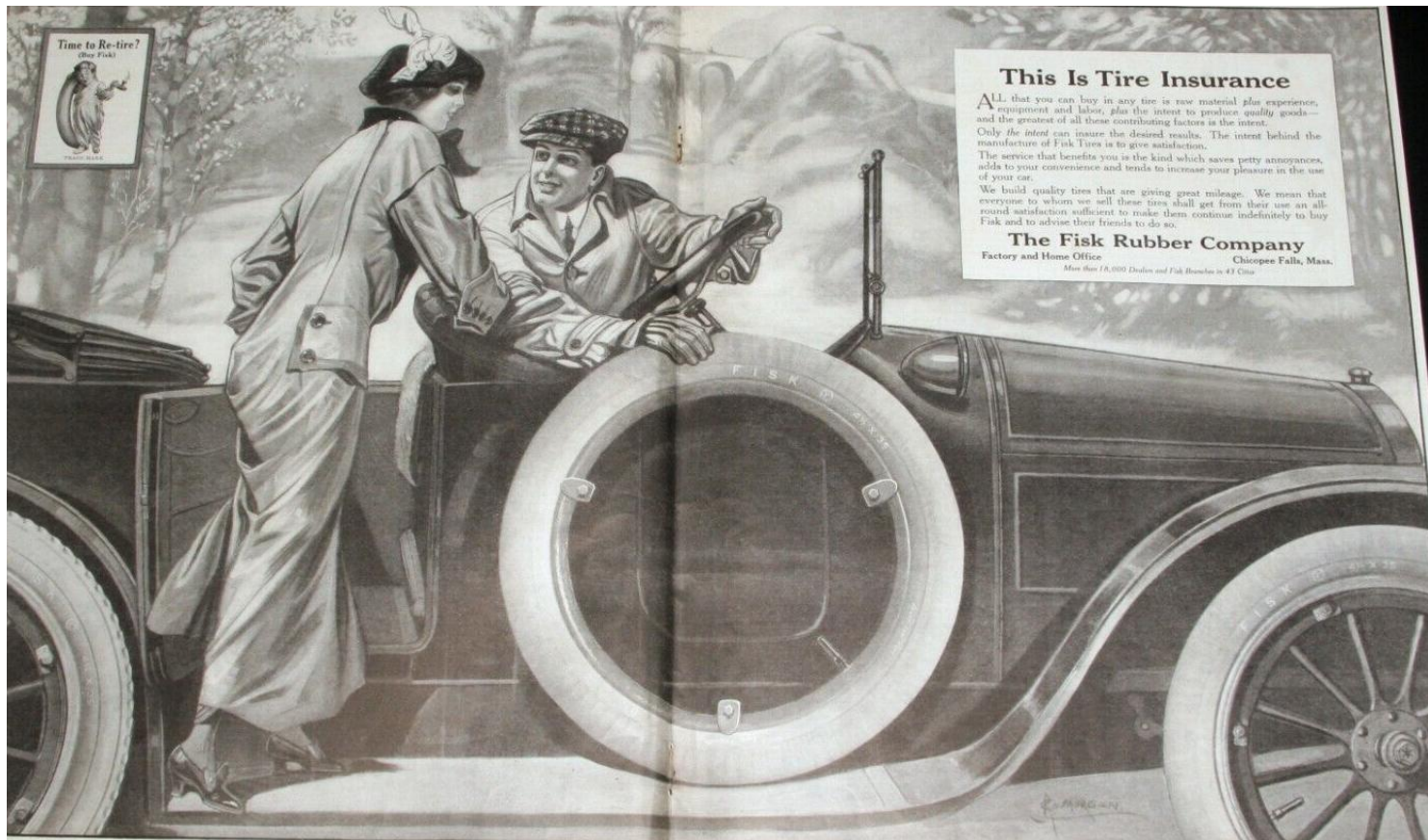
A German family in what I think is a 1905 Mercedes 28/30.



Buffalo Bill Cody died in 1917 while visiting his sister in Denver. His wife Louisa complied with his wish to be buried on Lookout Mountain overlooking the plains of Colorado. It was a place where he had spent the happiest times of his life. In 1927 Jack Dempsey drove his new Lincoln to the top of Lookout Mountain to visit Buffalo Bill's grave.



A family photo of a picnic at the beach in 1927 with a Ford and possibly a Buick on the right.



Time to Re-tire?

(Buy Fisk)



This Is Tire Insurance

ALL that you can buy in any tire is raw material *plus* experience, equipment and labor, *plus* the intent to produce quality goods—and the greatest of all these contributing factors is the intent.

Only *the intent* can insure the desired results. The intent behind the manufacture of Fisk Tires is to give satisfaction.

The service that benefits you is the kind which saves petty annoyances, adds to your convenience and tends to increase your pleasure in the use of your car.

We build quality tires that are giving great mileage. We mean that everyone to whom we sell these tires shall get from their use an all-round satisfaction sufficient to make them continue indefinitely to buy Fisk and to advise their friends to do so.

The Fisk Rubber Company

Factory and Home Office

Chicopee Falls, Mass.

More than 18,000 Dealers and Fisk Branches in 43 States